

24 Years
(Since 1996)



SCIENCE CATALOGUE



2020

Latest Best Quality Educational Teaching Aids

HEALTH SECTION

HEALTH CARE SERIES

Laminated - Size 50 x 75 cms
Each ₹ 100.00

- HC-01** Health Rules
- HC-02** Causes of Diseases
- HC-03** Prevention of Diseases
- HC-04** Effects of Alcohol
- HC-05** Tobacco & Habit Forming Drugs
- HC-06** Clean Body
- HC-07** Clean Water
- HC-08** Constituents of Food
- HC-09** Malnutrition
- HC-10** Immunization



NEW FAMILY PLANNING CHARTS

Laminated - Size 50 x 75 cms
Each ₹ 100.00

- FP-01** Unplanned Family
- FP-02** Planned family (Happy family)
- FP-03** Family Planning Methods
- FP-04** Marriage & Child Planning

PREVENT THE DISEASES

Laminated - Size 50 x 75 cms Each ₹ 100.00

- | | |
|-----------------------------|------------------------------------|
| PD-01 Cholera | PD-13 Dysentery |
| PD-02 Malaria | PD-14 Hepatitis |
| PD-03 AIDS | PD-15 Heart Attack |
| PD-04 Plague | PD-16 Diabetes |
| PD-05 Tuberculosis | PD-17 Asthma |
| PD-06 Leprosy | PD-18 Arthritis |
| PD-07 Influenza | PD-19 Thyroid |
| PD-08 Jaundice | PD-20 Blood Pressure |
| PD-09 Cancer | PD-21 Dengue |
| PD-10 Typhoid | PD-22 Measles |
| PD-11 Viral Diseases | PD-23 Food Poisoning |
| PD-12 Chicken Pox | PD-24 Poliomyelitis (Polio) |



FOOD & NUTRITION

Laminated - Size 70 x 100 cms ₹ 170.00

- FN-01** Our Food
- FN-02** Proteins
- FN-03** Fats
- FN-04** Carbohydrates
- FN-05** Vitamins
- FN-06** Minerals
- FN-07** Water & Roughage
- FN-08** Deficiency Diseases
- FN-09** Over Nutrition Dis-orders
- FN-10** Food's Nutritive Value



MOTHERCRAFT & CHILD WELFARE

Laminated - Size 50 x 75 cms Each ₹ 120.00

- | | |
|--|---|
| MCW-01 Welfare of Mother (Diet in Pregnancy) | MCW-06 Baby's Development |
| MCW-02 Preparation for confinement | MCW-07 Baby's Weight |
| MCW-03 Ready for Confinement (Call a trained 'Dai') | MCW-08 Suji-Baby's first solid food |
| MCW-04 Correct & Regular Feeding | MCW-09 Baby's Habits |
| MCW-05 Baby's Diet | MCW-10 Welfare of Mother (Care in Pregnancy) |

FIRST AID CHARTS

Laminated - Size 50 x 75 cms Each ₹ 100.00

- FAC-01** Skeleton & Circulatory System
- FAC-02** Triangular Bandages
- FAC-03** Roller Bandages
- FAC-04** Fractures
- FAC-05** Artificial Respiration
- FAC-06** Transport of the injured
- FAC-07** Unconsciousness
- FAC-08** Haemorrhage
- FAC-09** Electric Shock Treatment
- FAC-10** Emergency Resuscitation
- FAC-11** Removal of foreign bodies from eye, ear, nose
- FAC-12** Burns & Scalds
- FAC-13** Snakes & Their Bites
- FAC-14** Poisons and their Antidotes
- FAC-15** Outline of First Aid & Appliances



YOGASAN CHARTS

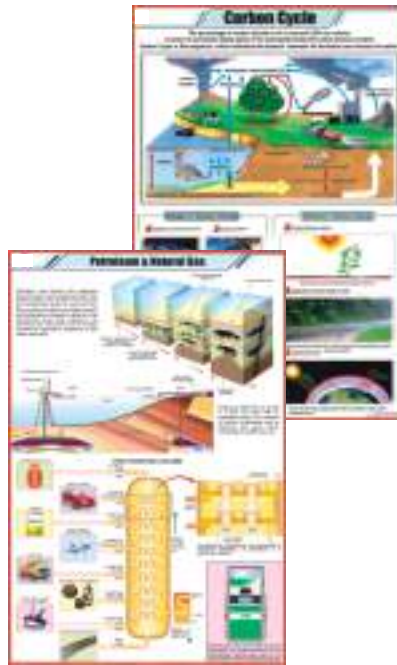
Laminated - Size 50 x 75 cms Each ₹ 100.00

- YO-01** Shuddhi Kriyas-Shat Karmas
- YO-02** Shankh Prakshalan
- YO-03** Surya Namaskar
- YO-04** Yog Mudras, Padmasan & Matsyasan
- YO-05** Paschimottanasan & Ardh Matsyendrasan
- YO-06** Vajrasan, Ustrasan & Supt Vajrasan
- YO-07** Bhujangasan, Shalbhasan, Dhanurasan & Mayurasan
- YO-08** Pawan Muktasan & Chakrasan
- YO-09** Sarvangasan & Halasan
- YO-10** Bandhas & Pranayams
- YO-11** Spine & Related Organs
- YO-12** Healthy Eye



Laminated - Size 58 x 90 cms Each ₹ 180.00

- STG-01** The Cell Theory
- STG-02** DNA
- STG-03** RNA
- STG-04** Levels of Organization
- STG-05** Origin of Life
- STG-06** Cellular Respiration
- STG-07** Animal Husbandry
- STG-08** Economic Plants
- STG-09** Basic Agricultural Practices
- STG-10** Medicinal Plants - I
- STG-11** Medicinal Plants - II
- STG-12** Energy Needs
- STG-13** Fossil Fuels
- STG-14** Petroleum & Natural Gas
- STG-15** Renewable Sources of Energy
- STG-16** Nuclear Energy
- STG-17** Bio-Gas
- STG-18** Nitrogen Cycle
- STG-19** Oxygen Cycle
- STG-20** Carbon Cycle



- STG-21** Fire & Fire Extinguishers
- STG-22** Soil- A natural Resource
- STG-23** How Soil is formed and Soil Profile
- STG-24** Types of Soils in India
- STG-25** Food Chain in Forest Ecosystem
- STG-26** Solar Cooker
- STG-27** Water Harvesting
- STG-28** Purification of Water
- STG-29** Poultry
- STG-30** Sericulture (L.H. Silkworm)
- STG-31** Apiculture (L.H. Honeybee)
- STG-32** Food Pyramid
- STG-33** Microorganisms
- STG-34** Mutation
- STG-35** Enzymes
- STG-36** DNA Replication
- STG-37** Osmosis
- STG-38** Evidence of the Evolution of Life
- STG-39** Food Chain in Pond Ecosystem
- STG-40** Food Chain in Desert Ecosystem

PHYSICS CHARTS

Laminated - Size 58 x 90 cms Each ₹ 180.00

- STP-01** Motion
- STP-02** Changes Around Us
- STP-03** Metric Weights and Measures
- STP-04** Measurements
- STP-05** Sound
- STP-06** Wave Motion
- STP-07** Simple Machine
- STP-08** The Lever
- STP-09** Archimedes Principal
- STP-10** Pascal's Law
- STP-11** Reflection of Light
- STP-12** Refraction Through a Glass Slab
- STP-13** Refraction Through Prisms
- STP-14** Refraction of Light Through lenses
- STP-15** Optical Instruments
- STP-16** Microscope
- STP-17** Telescope
- STP-18** Eye and its Defects
- STP-19** Electric Current-Sources-Effects
- STP-20** Static Electricity
- STP-21** Current Electricity
- STP-22** Ohm's Law & Electrical Resistance
- STP-23** Electric Circuit's Components Symbols
- STP-24** Magnetism
- STP-25** Properties of a Magnet, Making a Magnet
- STP-26** Electromagnetism
- STP-27** Electromagnetic Induction
- STP-28** Electric Motor
- STP-29** Electric Bell



- STP-30** Electric Generator
- STP-31** Dynamo
- STP-32** Force
- STP-33** Friction
- STP-34** Gravitation
- STP-35** Moment and Couple
- STP-36** Work and Power
- STP-37** Nuclear Fusion
- STP-38** Nuclear Fission
- STP-39** Nuclear Reactor
- STP-40** Radioactivity
- STP-41** Radio Telescope
- STP-42** X-Ray
- STP-43** Television
- STP-44** Multistage Rocket
- STP-45** Wind Mill
- STP-46** Petrol Engine
- STP-47** Steam Engine
- STP-48** Diode
- STP-49** Universe I (Life Cycle of a Star)
- STP-50** Universe II (Comets & Meteors)
- STP-51** Star Map
- STP-52** Newton's Laws of Motion
- STP-53** Simple Electric Current
- STP-54** Measuring Instruments
- STP-55** Energy
- STP-56** Heat and Temperature
- STP-57** Different Types of Satellite

SCIENCE SECTION

CHEMISTRY CHARTS

Laminated - Size 58 x 90 cms Each ₹ 180.00

- STC-01** Atom And Atomic Structure
- STC-02** Chemical Reactivity of an Element
- STC-03** Chemical Reaction & its Characteristics
- STC-04** Classification of Chemical Reactions
- STC-05** Valencies of Elements
- STC-06** Chemical Bonds
- STC-07** Combustion
- STC-08** Separation of Substances
- STC-09** Atmosphere and Composition of Air
- STC-10** Occurrence and Forms of Carbon
- STC-11** Carbon dioxide and Carbon Monoxide
- STC-12** Carbonates and Bicarbonates
- STC-13** Sulphur
- STC-14** Mole Concept
- STC-15** Composition of Water by Weight
- STC-16** Different Kinds of Cells
- STC-17** Electroplating & Corrosion
- STC-18** Cement and Concrete
- STC-19** Manufacture of Glass
- STC-20** Alkanes
- STC-21** Alkenes
- STC-22** Alkynes
- STC-23** Alcohols
- STC-24** Esters
- STC-25** Organic Acids
- STC-26** Soaps and Detergents

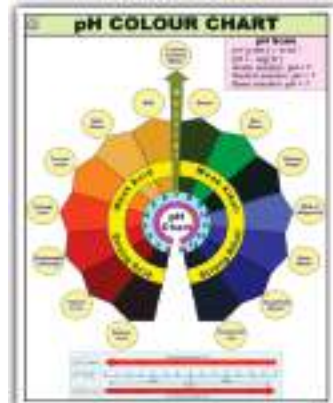
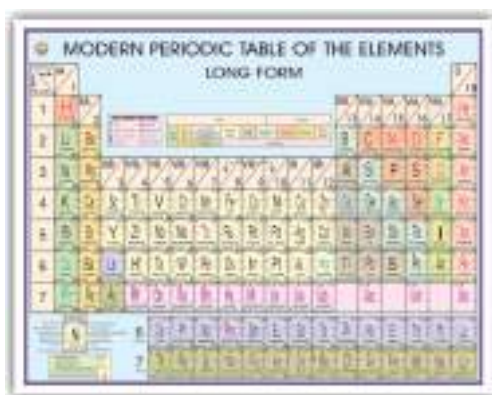


- STC-27** Plastics
- STC-28** Synthetic Fibres
- STC-29** Blast Furnace
- STC-30** Aluminium Metallurgy
- STC-31** Copper Metallurgy
- STC-32** Extraction of Zinc
- STC-33** Prep. of Sodium Hydroxide & Sodium Carbonate
- STC-34** Prep. of Nitrogen and Nitric acid
- STC-35** Prep. of Chlorine and Hydrochloric acid
- STC-36** Prep. of Sulphur Dioxide and Sulphuric acid
- STC-37** Prep. of Ammonia and Haber Process
- STC-38** Prep. of Oxygen and Liquefaction of Air
- STC-39** Prep. of H₂ & Co₂
- STC-40** Manufacture of Bleaching Powder
- STC-41** Manufacture of Phosphorus
- STC-42** Crystal Lattices
- STC-43** Close Packed Structures
- STC-44** Sodium Chloride Crystal
- STC-45** Acids, Bases and Salts
- STC-46** Electrolysis
- STC-47** Atoms & Molecules
- STC-48** Solids, Liquids & Gases
- STC-49** Shapes of Atomic Orbitals
- STC-50** Chemical Equilibrium
- STC-51** Kinetic Theory

CHEMISTRY LAB CHARTS

- PT-01** Mendeleev's Periodic Table 100 x 70 cms
- PT-02** Long Form Periodic Table 140x100 cms
- PT-03** Long Form Periodic Table 100 x 70 cms
- CL-01S** Laboratory Safety Chart 70 x 100 cms
- CL-02S** Laboratory Techniques Chart 70 x 100 cms
- CL-03S** pH Colour Chart 70 x 100 cms
- CL-04S** Laboratory First Aid Chart 70 x 100 cms

- Synthetic ₹ 230.00**
- Laminated ₹ 350.00**
- Laminated ₹ 170.00**
- Synthetic ₹ 230.00**
- Synthetic ₹ 230.00**
- Synthetic ₹ 230.00**
- Synthetic ₹ 230.00**



BOTANY CHARTS

Laminated - Size 58 x 90 cms Each ₹ 180.00

- STB-01** Plant Kingdom
- STB-02** Typical Plant
- STB-03** Typical Plant Cell
- STB-04** Plant Cell Organelles
- STB-05** Plant Tissues
- STB-06** Plant Cell Mitosis
- STB-07** Plant Cell Meiosis
- STB-08** T.S. Stem - Monocot
- STB-09** T.S. Dicot Stem (Sunflower)
- STB-10** T.S. Root - Monocot
- STB-11** T.S. of Dicot Root
- STB-12** T.S. Leaf - Monocot
- STB-13** T.S. Leaf - Dicot
- STB-14** Types of Leaves
- STB-15** Root Systems
- STB-16** Structure of Flower
- STB-17** Calyx and Corolla
- STB-18** Inflorescences
- STB-19** Fruits
- STB-20** The Seed : Structure & Germination
- STB-21** Germination of Seed : Bean & Pea
- STB-22** Dispersal of Fruits & Seeds
- STB-23** Photosynthesis
- STB-24** Plant Diseases

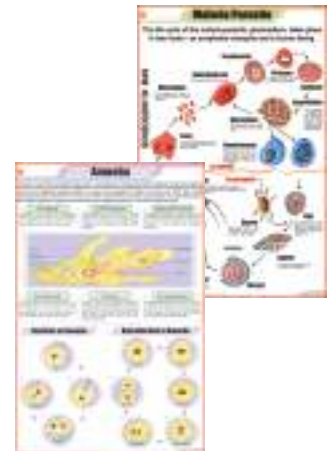


- STB-25** Reproduction in Plants
- STB-26** Pollination
- STB-27** Double Fertilization
- STB-28** Artificial Vegetative Propagation
- STB-29** Stem Modifications
- STB-30** Root Modifications
- STB-31** Hydrophytes
- STB-32** Mesophytes
- STB-33** Xerophytes
- STB-34** Insectivorous Plants
- STB-35** Fungi
- STB-36** Algae
- STB-37** Viruses
- STB-38** Bacteria
- STB-39** Life Cycle of Fern
- STB-40** Life Cycle of Moss
- STB-41** Spirogyra
- STB-42** Life Cycle of Mushroom
- STB-43** Leaf Modification
- STB-44** Parasitic Plants
- STB-45** Mucor : Structure & Reproduction
- STB-46** Regions of Root
- STB-47** Vascular Bundle
- STB-48** Secondary Growth

ZOOLOGY CHARTS

Laminated - Size 58 x 90 cms Each ₹ 180.00

- | | |
|--|--|
| <ul style="list-style-type: none"> STZ-01 Animal Kingdom STZ-02 Animal Cell STZ-03 Animal Cell Organelles STZ-04 Animal Tissues STZ-05 Animal Cell Mitosis STZ-06 Animal Cell Meiosis STZ-07 Gametogenesis in Animals STZ-08 Fertilization in Animals STZ-09 Protozoa STZ-10 Amoeba STZ-11 Malaria Parasite STZ-12 Paramoecium STZ-13 Hydra STZ-14 Liver Fluke STZ-15 Tapeworm STZ-16 Roundworm (Ascaris) STZ-17 Hookworm STZ-18 Life History of Mosquito STZ-19 Life Cycle of Butterfly STZ-20 Life History of Housefly STZ-21 Life History of frog STZ-22 Human Blood STZ-23 Body's Defense STZ-24 Harmful Insects | <ul style="list-style-type: none"> STZ-25 Beneficial Insects STZ-26 Food Habits of Birds STZ-27 Fish Anatomy STZ-28 Birth of a Bird's Chick STZ-29 Earthworm I : Ext. Morphology & Reproduction STZ-30 Earthworm II : Blood Circulation, Respiratory & Nervous System STZ-31 Earthworm III : Digestion, Skin & Excretion STZ-32 Cockroach I: Morphology & Reproduction STZ-33 Cockroach II : Blood Circulation, Respiratory & Nervous System STZ-34 Cockroach III : Digestion, Excretory, Skin & Muscles STZ-35 Vertebrate Classes STZ-36 Sense Organs STZ-37 General Dissection of Rabbit STZ-38 Neuron STZ-39 Early Development of the Frog STZ-40 Frog's Morphology & Internal Structure STZ-41 Frog's Urogenital System STZ-42 Frog's Circulatory System STZ-43 Frog's Nervous System STZ-44 Frog's Muscular System STZ-45 Life Cycle of Cockroach STZ-46 Skeleton of a Bird STZ-47 Skeleton of Rabbit |
|--|--|



DETAILED HUMAN PHYSIOLOGY CHARTS

Laminated Size 70 x 100 cms Each ₹ 170.00

- | | |
|--|---|
| HP-01 Skeleton System | HP-10 Human Heart |
| HP-02 Muscular System | HP-11 Endocrine System |
| HP-03 Blood Circulation | HP-12 Reproductive System (Male) |
| HP-04 Nervous System | HP-13 Reproductive System (Female) |
| HP-05 Digestive System | HP-14 Human Embryology |
| HP-06 Eye | HP-15 Lymphatic System |
| HP-07 Ear | HP-16 Brain |
| HP-08 Kidney, Skin & Excretory Organs | HP-17 Teeth & Dental Care |
| HP-09 Respiratory System | HP-18 Human Anatomy |



DETAILED HUMAN PHYSIOLOGY CHARTS

Synthetic Size 70 x 100 cms Each ₹ 230.00

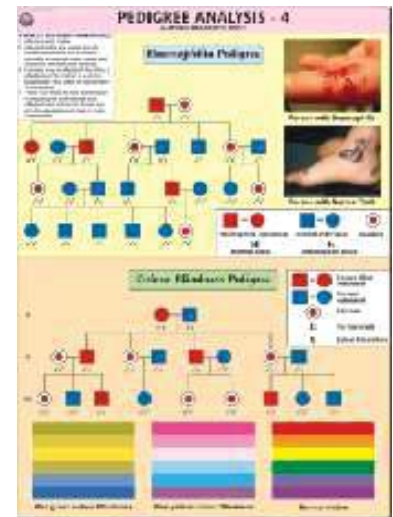
- | | |
|---|--|
| HP-01S The Skeleton | HP-17S Human Teeth |
| HP-02S Muscles | HP-18S Pregnancy & Birth |
| HP-03S Blood Circulation | HP-19S Human Kidney |
| HP-04S Nervous System | HP-20S Urinary Tract |
| HP-05S Digestive System | HP-21S Human Skull |
| HP-06S Eye | HP-22S Ear, Nose, Throat |
| HP-07S Ear | HP-23S Liver, Gall bladder & Pancreas |
| HP-08S Kidney, Skin & Excretory Organs | HP-24S Human Lungs |
| HP-09S The Respiratory System | HP-25S Joints of the Body |
| HP-10S Human Heart | HP-26S Immune System |
| HP-11S Endocrine System | HP-27S Human Skin |
| HP-12S Reproductive (Male) | HP-28S Movable Joints |
| HP-13S Reproductive (Female) | HP-29S Human Spinal Cord |
| HP-14S Human Embryology | HP-30S Menstrual Cycle |
| HP-15S Lymphatic System | HP-31S Contraception (Birth Control) |
| HP-16S Human Brain | HP-32S Vertebral Column |



CHARTS ON GENETICS & EVOLUTION

Synthetic Size 70 x 100 cms Each ₹ 230.00

- GE-01S** Pedigree Analysis-1 : Standard Symbols used in Pedigree Analysis & Sample Pedigree
- GE-02S** Pedigree Analysis-2 : Autosomal Dominant Trait Pedigree
- GE-03S** Pedigree Analysis-3 : Autosomal Recessive Trait Pedigree
- GE-04S** Pedigree Analysis-4 : X-Linked Recessive Trait Pedigree
- GE-05S** Pedigree Analysis-5 : X-Linked Dominant Trait Pedigree
- GE-06S** Pedigree Analysis-6 : Y-Linked Trait Pedigree
- GE-07S** Homologous Organs-Animals : Bat, Turtle, Horse, Human, Bird & Dolphin
- GE-08S** Homologous Organs-Animals : Bird, Butterfly, Pterosaur & Bat
- GE-09S** Homologous Organs-Plants : Bougainvillea, Cucurbita, Euphorbia, Opuntia etc.
- GE-10S** Homologous Organs-Plants : Pyracantha, Berberis Vulgaris, Prosopis Grandulosa, Black Locust
- GE-11S** Hybridisation-1 (Monohybrid Cross) : Cross between Purple & White Coloured Flower
- GE-12S** Hybridisation-2 (Dihybrid Cross) : Cross between Pea Plants differing in two traits
- GE-13S** Hybridisation-3 (Incomplete Dominance) : Cross between Red & White Snapdragon Flower



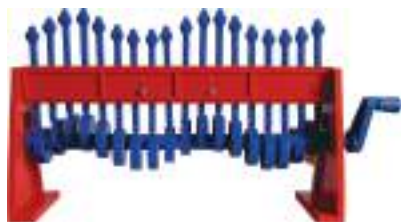
CHARTS ON AIDS

Synthetic Size 70 x 100 cms Each ₹ 230.00

- AS-01S** HIV
- AS-02S** Transmission of HIV
- AS-03S** Prevention
- AS-04S** How AIDS is not transmitted
- AS-05S** Progress of Infection
- AS-06S** Opportunistic Diseases
- AS-07S** Sexually Transmitted Diseases
- HP-26S** Human Immune System



PHYSICS MODELS



PH01
Wave Motion
₹ 1150.00



PH02
Blast Furnace
₹ 1950.00



PH03
Wind Mill
₹ 950.00



PH04
Fleming Right Hand Rule
₹ 1150.00



PH05
Fleming Left Hand Rule
₹ 1150.00



PH06
Nuclear Reactor
₹ 1750.00



PH07
Electric Motor
₹ 1000.00



PH08
Generator Model
A 220 volts ₹ 2350.00
B 30 volts ₹ 1700.00



PH09
Solar Energy Kit
5 in 1
₹ 1325.00

PH-10	Satellite Working Model	₹ 1050.00	PH-15	Solar Pump	₹ 1100.00
PH-11	Water Voltmeter	₹ 950.00	PH-16	Solar Fan	₹ 580.00
PH-12	Traffic Light Model	₹ 1500.00	PH-17	Solar Bulb	₹ 450.00
PH-13	Space Shuttle Model	₹ 2400.00	PH-18	Floating Magnet	₹ 325.00
PH-14	Petroleum Purification Model	₹ 4250.00	PH-19	Simple Balance	₹ 1200.00

CHEMISTRY MODELS



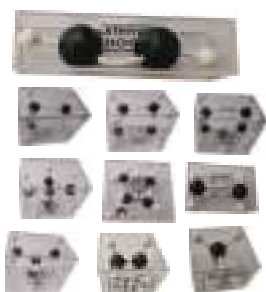
CH01
Sulphur
₹ 450.00



CH02
Sodium Chloride
₹ 900.00



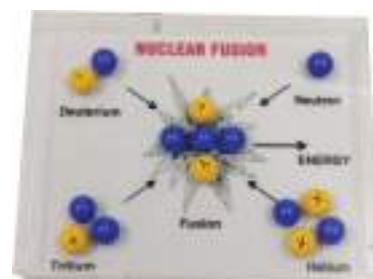
CH03
Diamond Crystal
₹ 1200.00



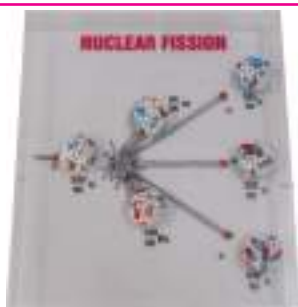
CH04
Hydrocarbon (Set of 10)
₹ 2200.00



CH05
Nuclear Chain Reaction
₹ 1800.00



CH06
Nuclear Fusion
₹ 900.00



CH07
Nuclear Fission
₹ 1600.00



CH08
Nuclear Reactor
₹ 1750.00

CH-10 Carbon Nano Tube	₹ 4450.00	CH-15 Formation of Chlorine ion	₹ 1700.00
CH-11 Bucky Ball Model C-60	₹ 1650.00	CH-16 Covalent Bond in Water Molecules	₹ 950.00
CH-12 Fullerenes Crystal Model	₹ 1700.00	CH-17 Silicon Atomic Structure	₹ 950.00
CH-13 Helium Molecules	₹ 800.00	CH-18 Yellow Phosphorous Molecules	₹ 375.00
CH-14 Isotopes of Hydrogen	₹ 500.00	CH-19 Black Phosphorous Molecules	₹ 450.00

INDIAN MODELS ON HUMAN ANATOMY



HA-101
HUMAN SKELETON
 Life Size
 Made of Fibre
 (with Stand)
 ₹ 4500.00



HA-102 HUMAN TORSO
 A. LIFE SIZE ₹ 4500.00
 B. SMALL SIZE ₹ 1600.00



HA-103
HUMAN BRAIN
 ₹ 400.00



HA-104
HUMAN EAR
 ₹ 400.00



HA-109
HUMAN EMBRYO (SET OF 9)
 ₹ 3600.00 (Per Set)



HA-107
HUMAN KIDNEY
 ₹ 400.00



HA-108
HUMAN EYE
 ₹ 400.00



HA-106
HUMAN HEART
 ₹ 400.00



HA-105
HUMAN LUNGS
 ₹ 400.00



HA-110
HUMAN JOINTS (set of 6)
 ₹ 4200.00 (Per Set)

HUMAN ANATOMY 3-D MODELS

Deluxe quality, mounted on wooden board ₹ 700.00 Each

HA-01 Teeth	HA-16 Heart
HA-02 Circulatory System	HA-17 Eye
HA-03 Digestive System	HA-18 Ear
HA-04 Respiratory System	HA-19 Male Pelvis
HA-05 Nervous System	HA-20 Female Pelvis
HA-06 Skeleton	HA-21 Reproductive Organs (Female)
HA-07 Head & Neck	HA-22 Reproductive Organs (Male)
HA-08 Skin	HA-23 Lungs
HA-09 Mouth	HA-24 Skull
HA-10 Tongue	HA-25 Excretory System
HA-11 Spinal Cord	HA-26 Endocrine System Male
HA-12 Stomach	HA-27 Endocrine System Female
HA-13 Liver	HA-28 Muscular System Front View
HA-14 Kidney	HA-29 Muscular System Back View
HA-15 Brain	HA-30 Nose



Digestive System

BOTANY MODELS

Model Size 60 x 45 cm ₹ 1600.00 Each

BMB-01 Plant Cell	BMB-08 T.S. Monocot Root	BMB-15 Life Cycle : Moss
BMB-02 Germination of Seed	BMB-09 T.S. Dicot Root	BMB-16 Life Cycle : Fern
BMB-03 Fertilization & Angiosperms	BMB-10 T.S. Monocot Stem	BMB-17 Life Cycle : Fungus
BMB-04 Plant Cell Meiosis	BMB-11 T.S. Dicot Stem	BMB-18 Spirogyra
BMB-05 Plant Cell Mitosis	BMB-12 T.S. Monocot Leaf	BMB-19 Pitcher Plant
BMB-06 L.S. Flower	BMB-13 T.S. Dicot Leaf	BMB-20 Funaria Plant
BMB-07 L.S. Ovary	BMB-14 Root Tip	

ZOOLOGY MODELS

Model Size 60 x 45 cm ₹ 1600.00 Each

BMZ-01 Animal Cell	BMZ-08 Malarial Parasite	BMZ-15 Development of Frog
BMZ-02 Animal Cell Meiosis	BMZ-09 Bacteria	BMZ-16 Life History of Silk Worm
BMZ-03 Animal Cell Mitosis	BMZ-10 Virus	BMZ-17 Life History of Mosquito
BMZ-04 Amoeba	BMZ-11 Frog Dissection	BMZ-18 Life History of Honey Bee
BMZ-05 Paramecium	BMZ-12 Rat Dissection	BMZ-19 Life History of Butterfly
BMZ-06 Hydra	BMZ-13 Fish Dissection	BMZ-20 Life Cycle of Tapeworm
BMZ-07 Euglena	BMZ-14 Rabbit Dissection	



BM-01
PLANT CELL
₹ 750.00



BM-02
TYPICAL FLOWER
₹ 500.00



BM-03
FLOWER
ON STAND
₹ 1000.00



ZM-01
ANIMAL CELL
₹ 500.00

IMPORTED MODELS ON HUMAN ANATOMY



HUMAN SKELETON MODELS



- RI-001** LIFE SIZE MADE OF PVC PLASTIC ₹ 20000.00
- RI-002** SKELETON WITH NERVES & BLOOD VESSELS (85 cms) ₹ 7200.00
- RI-003** MINI SKELETON WITH DETACHABLE JOINTS (46 cms) ₹ 2000.00
- RI-004** DISARTICULATED SKELETON (approx. 200 bones) ₹ 13650.00



RI-005 HUMAN TORSO-UNISEX-85 CMS (23 PARTS) ₹ 20000.00



RI-006 HUMAN TORSO-SMALL 46 cms (23 PARTS) ₹ 4500.00



RI-007 DENTAL MODEL-SMALL ₹ 1700.00



RI-008 DENTAL MODEL-JUMBO ₹ 3950.00



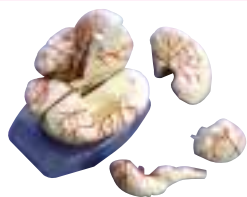
RI-009 JUMBO HEART MODEL ₹ 4000.00



RI-010 GIANT EYE MODEL ₹ 2900.00



RI-011 KIDNEY MODEL ₹ 2400.00



RI-012 BRAIN WITH ARTERIES ₹ 2650.00



RI-013 GIANT EAR MODEL ₹ 3100.00



RI-014 LIVER, PANCREAS & DUODENUM ₹ 3000.00



RI-015 PUMPING HEART MODEL ₹ 2050.00



RI-016 STOMACH MODEL ₹ 2650.00



RI-017 SHOULDER JOINT ₹ 1840.00



RI-018 HIP JOINT ₹ 1840.00



RI-019 KNEE JOINT ₹ 1840.00



RI-020 ELBOW JOINT ₹ 1840.00



RI-021 FOOT JOINT ₹ 1840.00



RI-022 HAND JOINT ₹ 1840.00

IMPORTED MODELS ON HUMAN ANATOMY



RI-023 ADULT MALE PELVIS
₹ 2700.00



RI-024 ADULT FEMALE PELVIS
₹ 2700.00



RI-025 FEMALE PELVIC MUSCLES & ORGANS
₹ 2970.00



RI-026 BIRTH DEMONSTRATION MODEL
₹ 3780.00



RI-032 DNA MODEL
₹ 2000.00



RI-027 MALE UROGENITAL SYSTEM
₹ 2650.00



RI-029 SKIN MODEL ENLARGED
₹ 3000.00



RI-030 MODEL OF NASAL CAVITY
₹ 2000.00



RI-031 HUMAN LARYNX MODEL
₹ 2000.00



RI-028 FEMALE UROGENITAL SYSTEM ₹ 2650.00



RI-033 LARYNX, HEART & LUNGS MODEL
₹ 8800.00



RI-034 TRANSPARENT LUNG SEGMENT MODEL
₹ 7700.00



RI-038 PULMONARY ALVEOLI MODEL
₹ 2680.00



RI-039 VERTEBRAL WITH PELVIS & FEMUR HEADS
₹ 7200.00

RI-041 CPR Manikin
₹ 18400.00



RI-037 LIFE SIZE SKULL MODEL
₹ 2800.00

- 80%-70% of heart attacks occur either in the home or in the public places. In such cases, the person nearest at hand to the victim is often a bystander with no medical expertise.
- Less than 1/3 of victims receive the help they need, because most bystanders are untrained in CPR and are afraid they will do something wrong.
- If those present at the scene are able to provide CPR to the victim promptly, the latter's chances of survival are significantly increased.
- When the heart stops, the lack of oxygenated blood can cause brain damage in only a few minutes. A person may die within 8 to 10 minutes.
- CPR can keep oxygenated blood flowing to the brain and other vital organs until more definitive medical treatment can restore a normal heart rhythm.
- A recent study shows CPR to be effective in children and adolescents who suffer from non-traumatic cardiac arrest due to drowning, electrocution, or choking.

PORTRAITS OF GREAT PERSONALITIES

Size 31 × 43 Cms (approx.) ₹ 360.00 Each
 Size 37 × 50 Cms (approx.) ₹ 550.00 Each
 Size 45 × 60 Cms (approx.) ₹ 1100.00 Each



GREAT SCIENTISTS

- | | | |
|--|---|--|
| S-01 Charles Robert Darwin(B) | S-42 Dmitri I. Mendeleef(C) | S-83 Robert Hooke |
| S-02 Gregor Mendel(B) | S-43 Burbank Luther(B) | S-84 S.R. Ranganathan |
| S-03 Lamarck(B) | S-44 S.N. Bose(P) | S-85 J.B.S. Haldane |
| S-04 Louis Pasteur(B) | S-45 M.N. Saha(P) | S-86 Guglielmo Marconi |
| S-05 Dr. William Harvey(B) | S-46 K.S. Krishnan(P) | S-87 Wilbur Wright |
| S-06 Leonardo-da-Vinci(B) | S-47 K.N. Bahl(B) | S-88 Orville Wright |
| S-07 Sir Joseph Lister(B) | S-48 J.J. Thomson(P) | S-89 Neil Armstrong |
| S-08 Anton Van leeuwenhoek(B) | S-49 Neils Bohr(P) | S-90 Wihelm Roentgen |
| S-09 Carl Von Linnaeous(B) | S-50 Gilbert Newton Lewis(C) | S-91 S. Chandrasekhar |
| S-10 Edward Jenner(B) | S-51 A.P.J. Abdul Kalam(P) | S-92 Lord Kelvin |
| S-11 Sir James Young Simpson(B) | S-52 Dr. Vikram Sarabhai(P) | S-93 Charles Babbage |
| S-12 Thomos Henry Huxley(B) | S-53 Aryabhata(P,A & M) | S-94 Friedrich Wohler |
| S-13 Sir Edwin Ray Lankester(B) | S-54 Dr. S.S. Joshi(C) | S-95 Frederick William Herschel |
| S-14 Sir Ronald Ross(B) | S-55 Sir Alexander Flamming(B) | S-96 J. J. Berzelius |
| S-15 Hugo De-vries(B) | S-56 D. Mata Parshad(C) | S-97 James Chadwick |
| S-16 Sir Charles Bell(B) | S-57 Benjamin Franklin(P) | S-98 Dr. Vijay P Bhatkar |
| S-17 Alfred Russel Wallace(B) | S-58 Ernest Rutherford(P & C) | S-99 C. N. R. Rao |
| S-18 Sir J. C. Bose(B) | S-59 Dr. Raj Ramanna(P) | S-100 George Boole |
| S-19 Dr. Birbal Sahni(B) | S-60 Nicholas Copernicus(A & P) | S-101 Albert Abraham Michelson |
| S-20 Sunder Lal Hora(B) | S-61 Alessandro Volta(P) | S-102 Stephen Hawking |
| S-21 Galileo Galilei(P) | S-62 Alfred Nobel(C) | S-103 Amedeo Avogadro |
| S-22 Sir Issac Newton(P) | S-63 Anton Hnery Bekuerel(P) | S-104 Johannes Gutenberg |
| S-23 Sir C.V. Raman(P) | S-64 Atovan Gerok(P) | S-105 Pierre Curie |
| S-24 Dr. H.J. Bhabha(P) | S-65 Benjemin Thomson(P) | S-106 Hippocrates |
| S-25 Archemedes(P) | S-66 Crick(B) | S-107 Hermann Helmholtz |
| S-26 Albert Einstein(P) | S-67 Watson(B) | S-108 Charles Herbert Best |
| S-27 Thomas Alva Edison(P) | S-68 Edward Victor Aplaton(P) | S-109 Fredrick Grant Banting |
| S-28 Robert Boyle(P&C) | S-69 James Clark Maxwel(P) | S-110 Karl Landstenier |
| S-29 Marie Curie(P&C) | S-70 Jessek Luious Gelusale(P&C) | S-111 Robert Koch |
| S-30 Michael Faraday(C) | S-71 Johns Kepeler(A & P) | S-112 Stephen Hales |
| S-31 John Dalton(C) | S-72 Kalpana Chawla(A & P) | S-113 Rene T H Laennec |
| S-32 Dr. P.C. Ray(C) | S-73 Max Plank(P) | S-114 Susruta |
| S-33 Dr. H.G. Khorana(B & C) | S-74 Panchanan Maheshwari(B) | S-115 Edward Jenner |
| S-34 Dr. S.S. Bhatnagar(C) | S-75 Varah Mihir(A,P & M) | S-116 Sir Joseph Lister |
| S-35 S. Ramanujan(P & M) | S-76 Sunita Williams(A) | S-117 Morgagi |
| S-36 Antoine Laurent Lavoisier(C) | S-77 James Watt | S-118 Galen |
| S-37 William Ramsay(C) | S-78 Andre Marie Ampere | S-119 Charles Sherrington |
| S-38 Humphry Davy(C) | S-79 A. Graham Bell | S-120 Samuel Hahnemann |
| S-39 August Weismann(B) | S-80 Edwin Powell Hubble | S-121 Maharishi Charak |
| S-40 Joseph Priestley(C) | S-81 Rakesh Sharma | S-122 Dhanvantri |
| S-41 Aristotle(B) | S-82 M.S. Swaminathan | S-123 Ashwini Kumars |

PORTRAITS OF GREAT PERSONALITIES

Size 31 × 43 Cms (approx.)	₹ 360.00 Each
Size 37 × 50 Cms (approx.)	₹ 550.00 Each
Size 45 × 60 Cms (approx.)	₹ 1100.00 Each

LAB SAFETY RULES

- LSR-01** Chemical Reaction Must Be Supervised
- LSR-02** Do Not Add Water to Acid, Add Acid to Water
- LSR-03** Keep First Aid Box Handy
- LSR-04** Keep Our Face Away from Reaction
- LSR-05** Learn to Operate Fire Extinguisher
- LSR-06** Make Sure Sink Is Not Blocked
- LSR-07** Never Try To Taste The Chemicals
- LSR-08** No Smoking In The Lab
- LSR-09** Wear Gloves & Goggles During Experiment
- LSR-10** Use Fume Hood

HEALTH RULES

- HR-01** Height & Weight
- HR-02** No Smoking
- HR-03** Say No to Alcohol
- HR-04** Say No to Drugs

FIRST AID PART - I

Size 45 x 60 Cms (approx.)

- FA-01** First Aid Basics
- FA-02** First Aid Kit
- FA-03** Action in Emergency
- FA-04** CPR in Infants
- FA-05** CPR for Children
- FA-06** CPR Adult
- FA-07** Chocking in Children
- FA-08** Chocking Adult
- FA-09** Burns
- FA-10** Alcohol Poisoning

NURSING

Size 45 x 60 Cms (approx.)

- NU-01** Breast Changes in Pregnancy
- NU-02** Second Stage of Labour
- NU-03** Incomplete Breech Presentation
- NU-04** Uterine Changes in Pregnancy
- NU-05** Third Stage of Labour
- NU-06** Foot Presentation
- NU-07** Face Presentation
- NU-08** First Stage of Labour
- NU-09** Complete Breech Presentation
- NU-10** Shoulder Presentation
- NU-11** Brow Presentation
- NU-12** Caput Succedaneum
- NU-13** Spina Bifida
- NU-14** Twin Pregnancy
- NU-15** Congenital Malformation of New Born
- NU-16** Hydrocephalus
- NU-17** Breast Self Examination
- NU-18** Placenta Praevia
- NU-19** Cleft Lip Palate
- NU-20** Anencephalus

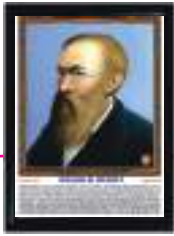
FIRST AID PART - II

Size 45 x 60 Cms (approx.)

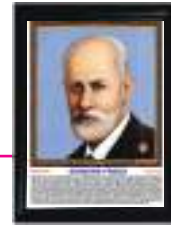
- FA-11** Poisoning
- FA-12** How Poisons Affect The Body
- FA-13** The Treatment of Common Poisons
- FA-14** Inhalation of Fumes
- FA-15** Drowning
- FA-16** Managing Asthma Episodes
- FA-17** Fractures
- FA-18** Bites & Stings
- FA-19** Bleeding and Types of Wounds
- FA-20** Bandages



PORTRAITS OF GREAT PERSONALITIES



Size 31 × 43 Cms (approx.) ₹ 360.00 Each
 Size 37 × 50 Cms (approx.) ₹ 550.00 Each
 Size 45 × 60 Cms (approx.) ₹ 1100.00 Each



GEMS OF PSYCHOLOGY

- PSY-01** Abraham H. Maslow
- PSY-02** Albert Bandura
- PSY-03** Alfred Adler
- PSY-04** Alfred Binet
- PSY-05** Aristotle
- PSY-06** B. F. Skinner
- PSY-07** C. L. Hull
- PSY-08** Carl G. Jung
- PSY-09** Carl R. Rogers
- PSY-10** Charles Bell
- PSY-11** Charles Darwin
- PSY-12** Charles Sherrington
- PSY-13** D.O. Hebb
- PSY-14** David Hume
- PSY-15** David Wechsler
- PSY-16** Dr. Cyril Burt
- PSY-17** E. B. Titchner
- PSY-18** E. C. Toleman
- PSY-19** E. H. Weber
- PSY-20** Edward L. Thorndike
- PSY-21** Edwin Guthrie
- PSY-22** Emil Kraepelin
- PSY-23** Erich Fromm
- PSY-24** Erik Erikson
- PSY-25** Ernest Jones

- PSY-26** F. A. P. Aveling
- PSY-27** F. J. Gall
- PSY-28** Francis Galton
- PSY-29** Frederick Perls
- PSY-30** G. S. Hall
- PSY-31** George Kelly
- PSY-32** Gordon Allport
- PSY-33** Gottfried W. Leibnitz
- PSY-34** Gustav T. Fechner
- PSY-35** Hans J. Eysenck
- PSY-36** Harlow
- PSY-37** Heinz Kohut
- PSY-38** Henry Murray
- PSY-39** Herbert Spencer
- PSY-40** Herman Rorschach
- PSY-41** Herman V Helmholtz
- PSY-42** Hermann Ebbinghaus
- PSY-43** Herry S. Sullivan
- PSY-44** Immanuel Kant
- PSY-45** Ivan P. Pavlov
- PSY-46** J. M. Baldwin
- PSY-47** J. M. Cattell
- PSY-48** J. W. Cannon
- PSY-49** Jean Piaget
- PSY-50** Johann F. Herbart

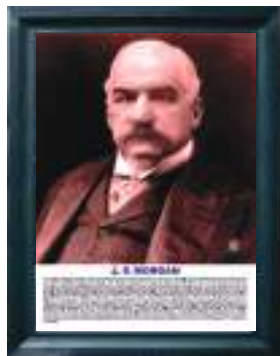
- PSY-51** Johannes P. Muller
- PSY-52** John B. Watson
- PSY-53** John Dewey
- PSY-54** John Locke
- PSY-55** Joseph Wolpe
- PSY-56** Julian Rotter
- PSY-57** K. S. Lashley
- PSY-58** Karen Horney
- PSY-59** Kurt Goldstein
- PSY-60** Kurt Koffka
- PSY-61** Kurt Lewin
- PSY-62** Max Wertheimer
- PSY-63** Melanie Klein
- PSY-64** Neil E. Miller
- PSY-65** Raymond B. Cattell
- PSY-66** Rene Descartes
- PSY-67** Rollo Reese May
- PSY-68** Sigmund Freud
- PSY-69** Thomas Hobbes
- PSY-70** Walter Mischel
- PSY-71** Wilhelm Wundt
- PSY-72** William James
- PSY-73** William Mc-Dougall
- PSY-74** William Sheldon
- PSY-75** Wolfgang Kohler

MANAGEMENT GURUS

- MG-01** Adam Smith
- MG-02** Alfred P. Sloan
- MG-03** Alvin Toffler
- MG-04** Bill Gates
- MG-05** Dale Carnegie
- MG-06** Douglas Mc Gregor
- MG-07** Frederick Taylor

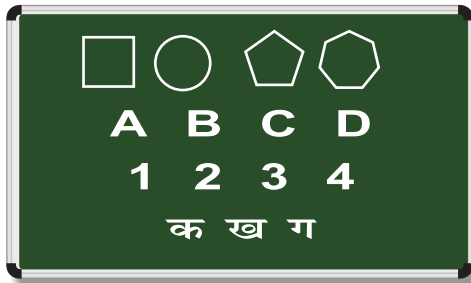
- MG-08** Henry Ford
- MG-09** J. D. Rockefeller
- MG-10** Joseph M. Juran
- MG-11** J P Morgan
- MG-12** Lee Iacocca
- MG-13** Warren E Buffett
- MG-14** Peter F.

- MG-15** J R D Tata
- MG-16** Amartya Kumar Sen
- MG-17** Dhirubhai Ambani
- MG-18** G D Birla
- MG-19** Narayana Murthy
- MG-20** Lakshmi Niwas Mittal



WRITING/DISPLAY BOARDS & ACCESSORIES

CHALK BOARD



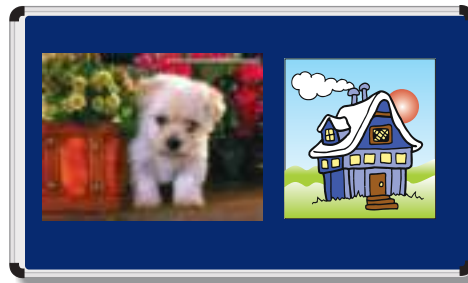
LAMINATED GREEN CHALK BOARD

₹ 90.00 per sq. Ft.

CERAMIC STEEL MAGNETIC CHALK BOARD

₹ 250.00 per sq. Ft.

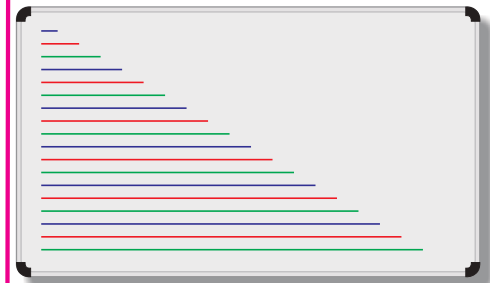
NOTICE BOARD



NOTICE BOARD

₹ 90.00 per sq. Ft.

WHITE BOARD



LAMINATED WHITE MARKER BOARD

₹ 90.00 per sq. Ft.

CERAMIC STEEL MAGNETIC WHITE BOARD

₹ 250.00 per sq. Ft.

NOTICE BOARD WITH ACRYLIC SHUTTER



Size (approx.)

Price in ₹

in Inches	In cms	Deluxe frame
36 x 24	90 x 60	₹ 1500.00
48 x 36	120 x 90	₹ 3000.00

DUSTERS FOR BOARDS

DS-01 Wooden Duster	₹ 25.00 each
DS-02 Wooden Duster Superior	₹ 35.00 each
DS-03 Plastic Duster Superior	₹ 50.00 each
DS-04 Plastic Magnetic Duster	₹ 100.00 each

CHALK FOR BOARDS

DS-05 Indian Make-Dustless	₹ 25.00 per box
DS-06 Indian Make-Coloured	₹ 40.00 per box

STANDS FOR BOARDS

DS-07 Tripod all metal Stand for Boards upto 160x120cms adjustable	₹ 1500.00
DS-08 Nickelled Heavy Base Pole Stand	₹ 2600.00

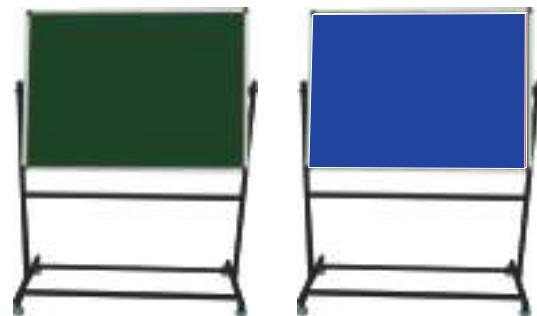
EXHIBITION DISPLAY SYSTEM



3 Boards of size 4'x3'-White, Green and Notice mounted on 4 Pipe Stands.(Panel can be expanded as long as required by joining more boards on stands)

₹ 8640.00 (Per Set)

MOVABLE BOARD



Size (approx.)

Price in ₹

in Inches	In cms	Deluxe frame
48 x 36	120 x 90	₹ 3200.00
48 x 72	120 x 180	₹ 5000.00
48 x 96	120 x 240	₹ 6200.00

LOBBY BOARD

Size 2'x3'
 Stainless Steel ₹ 10000.00
 Brass ₹ 12000.00



GOLD SIGN BOARDS

Size (approx.)
In cms

30 x 15
 45 x 30
 61 x 45
 61 x 61
 61 x 91
 61 x 122
 91 x 122



Price

₹ 640.00 each
 ₹ 1240.00 each
 ₹ 1980.00 each
 ₹ 2350.00 each
 ₹ 3400.00 each
 ₹ 4400.00 each
 ₹ 5900.00 each
 Letter/Figures Size ½" set of 100 ₹ 300.00 per set
 Letter/Figures Size 1" set of 100 ₹ 400.00 per set
 Letter/Figures Size 1½" set of 100 ₹ 600.00 per set
 Pedestal Pole Stand in Brass for Boards ₹ 5000.00 each

PRESKOGRAPH INTERCHANGEABLE BOARDS / LETTERS & FIGURES



Size (approx.)

Price

In Inches	In cms	In ₹
24 x 12	61 x 30	900.00
24 x 18	61 x 45	1275.00
36 x 24	91 x 61	2590.00
48 x 36	122 x 91	4100.00
60 x 48	152 x 122	6900.00
72 x 48	183 x 122	8300.00

Size (approx.)

Price

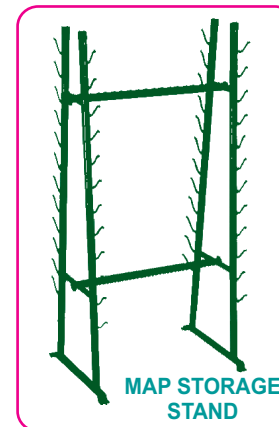
Size ½" set of 100 ₹ 135.00 per set
 Size ¾" set of 100 ₹ 150.00 per set
 Size 1" set of 100 ₹ 165.00 per set
 Size 1½" set of 100 ₹ 230.00 per set
 Size 2" set of 100 ₹ 400.00 per set
 Roman Type Size ¾" set of 100 ₹ 165.00 per set
 Roman Type Size 1" set of 100 ₹ 210.00 per set
 Roman Type Size 1½" set of 100 ₹ 280.00 per set
 Comma/ Full Stop set of 100 ₹ 115.00 per set
 Direction Pointers set of 100 ₹ 1400.00 per set
 Sleek Pointers set of 100 ₹ 150.00 per set

STORAGE STANDS FOR MAPS & CHARTS

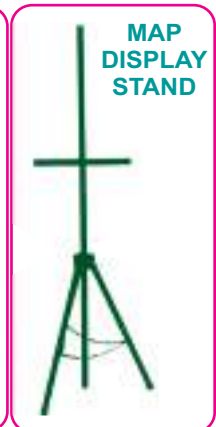
DS-12 For storing 24 maps made of iron painted ₹ 2600.00
DS-13 For storing 36 maps made of Iron painted ₹ 3000.00

DISPLAY STAND FOR MAPS & CHARTS

DS-14 For hanging the map in classroom.
 Light weight & easy to carry ₹ 1650.00



MAP STORAGE STAND



MAP DISPLAY STAND

PODIUM FOR CLASSROOMS & AUDITORIUM

ACRYLIC PODIUM



PA 1

Acrylic Podium-
Smoke/Black
(Wide Pillar
with Steel Rods)

₹ 12000.00

ACRYLIC PODIUM



PA 2

Acrylic Podium-
Transparent White
(Wide Pillar
with Steel Rods)

₹ 13000.00

ACRYLIC PODIUM



PA 3

Acrylic Podium-
Smoke/Black
(Slim Pillar)

₹ 9000.00

ACRYLIC PODIUM



PA 4

Acrylic Podium-
Transparent White
(Slim Pillar)

₹ 10000.00

ACRYLIC PODIUM



PA 5

Acrylic Podium-
Z-Shape

₹ 20000.00

WOODEN PODIUM



PA 6

Wooden Podium-
Wide Pillar -
Teak Finish

₹ 10000.00

WOODEN PODIUM



PA 7

Wooden Podium-
Wide Pillar with
Drawer

₹ 6750.00

WOODEN PODIUM



PA 8

Wooden Podium-
With Steel Frame

₹ 20000.00

KIDS PODIUM



PA 9

Wooden Podium
for Junior Section

₹ 7000.00

AUDIO PODIUM

Key Features :

- Built-in 60W amplifier, one tweeters and tree woofers and built-in MIC.
- Flexible goose neck MIC and lamp
- Two Handheld Wireless Mic
- Two MICs inputs, one line input and four AUX inputs
- R-2015 with optional two VHF handheld or collar wireless MICS, maximum range 10 meters.
- Finish : Black
- 60W rated power output
- MIC length : 47cm : Lamp length : 45cm
- Wooden top and steel bottom, steel body



PA 10
Audio Podium ₹ 40000.00

VISUAL TEACHING AIDS



PROJECTION SCREEN

70" x 50" with folding tripod stand	₹ 3200.00
84" x 60" with folding tripod stand	₹ 5000.00
96" x 70" with folding tripod stand	₹ 6500.00
70" x 50" Motorized	₹ 15000.00
84" x 60" Motorized	₹ 18000.00
96" x 70" Motorized	₹ 25000.00



SLIDE PROJECTOR

Manual ₹ 5000.00



OVERHEAD PROJECTOR

Double Lamp ₹ 9300.00

OVERHEAD PROJECTOR TRANSPARENCIES

Botany set of 75	₹ 3750.00	Chemistry set of 40	₹ 2000.00
Zoology set of 75	₹ 3750.00	Human Physiology set of 50	₹ 2500.00
Animal Cell & Tissues set of 15	₹ 750.00	Sense organs set of 20	₹ 1000.00
Chick Embryology set of 20	₹ 1000.00	Mathematics set of 15	₹ 750.00
Frog Development set of 15	₹ 750.00	Mathematics set of 50	₹ 2500.00
Mitosis set of 9	₹ 450.00	First Aid set of 50	₹ 2500.00
Meiosis set of 12	₹ 600.00	Geography set of 30	₹ 1500.00
Physics set of 50	₹ 2500.00	Our Universe (Astronomy) set of 10	₹ 500.00

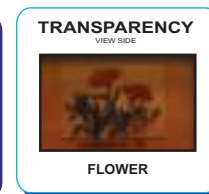
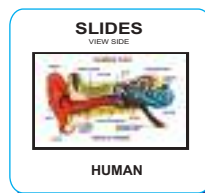
2"x2" COLOURED 35 mm SLIDES

Human Physiology set of 50	₹ 800.00	HEALTH SECTION	Mothercraft set of 30	₹ 480.00
Health Rules set of 15	₹ 240.00		Immunization set of 15	₹ 240.00
Yogasan set of 20	₹ 320.00		Child Welfare set of 20	₹ 320.00
Vitamin set of 10	₹ 160.00		Family Planning set of 100	₹ 1600.00
Common Diseases set of 10	₹ 160.00		Cholera set of 10	₹ 160.00
Human Body set of 10	₹ 160.00		Malaria set of 20	₹ 320.00
Community Cleanliness set of 8	₹ 128.00		Tuberculosis set of 20	₹ 320.00
First Aid set of 50	₹ 800.00			

Astronomy set of 30	₹ 480.00	OTHER TOPICS	Wonders of World set of 7	₹ 112.00
Geography set of 50	₹ 800.00		Good Habits set of 20	₹ 320.00
Mineral set of 30	₹ 480.00		Rocket set of 6	₹ 96.00
Rocks set of 25	₹ 400.00			

SLIDES FOR SCIENCE

Primary Science For Class I set of 40	₹ 640.00
Primary Science For Class II set of 40	₹ 640.00
Primary Science For Class III set of 40	₹ 640.00
Primary Science For Class IV set of 50	₹ 800.00
Primary Science For Class V set of 50	₹ 800.00
Science For Class VI set of 50	₹ 800.00
Science For Class VII set of 50	₹ 800.00
Science For Class VIII set of 100	₹ 1600.00
Science For Class IX set of 100	₹ 1600.00
Science For Class X set of 100	₹ 1600.00
Physics set of 100	₹ 1600.00
Chemistry set of 100	₹ 1600.00
Biology set of 100	₹ 1600.00



ZOOLOGY SECTION

Anatomy of Frog set of 30	₹ 480.00	Useful Insects set of 20	₹ 320.00
Anatomy of Rabbit set of 20	₹ 320.00	L.H. Butterfly set of 10	₹ 180.00
Amoeba & Paramecium set of 20	₹ 320.00	L.H. Honey Bee set of 10	₹ 160.00
Animal Histology set of 30	₹ 480.00	L.H. Housefly set of 10	₹ 160.00
Animal Kingdom set of 30	₹ 480.00	L.H. Mosquito set of 10	₹ 160.00
Animal World set of 40	₹ 640.00	L.H. Silkworm set of 10	₹ 160.00
Beaks & Feet of Birds set of 20	₹ 320.00	Liverfluke & Tapeworm set of 20	₹ 320.00
Birds set of 30	₹ 480.00	Mammals set of 30	₹ 480.00
Cockroach set of 20	₹ 320.00	Meiosis set of 15	₹ 240.00
Earthworm set of 20	₹ 320.00	Mendel Heredity set of 20	₹ 320.00
Chick Embryology set of 20	₹ 320.00	Mitosis set of 10	₹ 180.00
Frog Embryology set of 15	₹ 240.00	Prehistoric Animals set of 20	₹ 320.00
Rabbit Embryology set of 20	₹ 320.00	Protozoa set of 10	₹ 160.00
Evidence of Evolution set of 20	₹ 320.00	Reptiles & Amphibians set of 40	₹ 640.00
Fishes set of 30	₹ 320.00	Snakes set of 20	₹ 320.00
Hydra & Obelia set of 20	₹ 320.00	Algae Fungi set of 20	₹ 320.00
Harmful Insects set of 20	₹ 320.00	Angiospermic Families set of 15	₹ 240.00

BOTANY SECTION

Bacteria set of 20	₹ 320.00	Marchantia set of 15	₹ 240.00
Bryophyta & Pteridophyta set of 20	₹ 320.00	Meiosis set of 15	₹ 240.00
Cell Structure set of 20	₹ 320.00	Mitosis set of 10	₹ 160.00
Dispersal of Seeds set of 20	₹ 320.00	Plant Anatomy set of 20	₹ 320.00
Fern set of 10	₹ 160.00	Plant Histology set of 30	₹ 480.00
Fruits set of 20	₹ 320.00	Plant Kingdom set of 30	₹ 480.00
Germination of Seeds set of 20	₹ 320.00	Plant Physiology set of 30	₹ 480.00
Higher Plants set of 20	₹ 320.00	Pollination set of 10	₹ 160.00
Inflorescence set of 10	₹ 160.00	Roots set of 20	₹ 320.00
Insectivorous & Parasitic Plants set of 20	₹ 320.00	Spyrogyra set of 20	₹ 320.00
L.H. Mucar set of 15	₹ 240.00	Stems set of 20	₹ 320.00
Leaves set of 20	₹ 320.00	Vegetative Reproduction set of 20	₹ 320.00
		Water Plants set of 10	₹ 160.00

SPECIAL SLIDES (available In Album Only)

Biology Album for 10+1 set of 100	₹ 1600.00	Chemistry Album for 10+2 set of 100	₹ 1600.00
Biology Album for 10+2 set of 100	₹ 1600.00	Physics Album for 10+2 set of 100	₹ 1600.00
Medicinal Plants set of 100	₹ 1600.00	Rocks, Minerals & Gems set of 150	₹ 2400.00
Histology set of 100	₹ 1600.00	Human Physiology set of 100	₹ 1600.00
Pathology set of 100	₹ 1600.00		

LIST OF FEW OF OUR SATISFIED CUSTOMERS

Air Force Schools	Navodaya Schools
Akal Academies- Punjab, U.P., H.P.	Navyug Schools-Delhi
Army Public Schools	Presentation Convent-Delhi
Arya Bal Bharti Public School, Panipat (Haryana)	Queen Mary's School-Delhi
Apeejay Schools-Delhi, Haryana, U.P.	Ramjas Schools-Delhi
Bal Bharti Public Schools-Delhi, U.P.	Riverdale Intl. School-U.P.
CRPF Public Schools-Delhi	Rajkiya Pratibha Schools-Delhi
Dav Public Schools	Sachdeva Public Schools- Delhi
Delhi Public Schools	Salwan Public Schools-Delhi
G D Goenka Schools	Sarvodaya Schools
Ganga International Schools-Delhi, Haryana, Punjab	St. Joseph's School-Nagaland
Gurukul Concept School-Karnataka	St. Margaret Schools-Delhi
Jawahar Navodaya Vidyalayas	St. Paul's School-Nagaland
Kendriya Vidyalayas	St. Thomas School-U.P.
Laxman Public School-Delhi	Subodh Public School-Rajasthan
Little Angels School-Haryana	The Vedic Era School, Haryana
Modern School, Barakhamba Road, Delhi	Vishal Bharti Schools-Delhi
Maxfort Schools-Delhi	VSPK International School

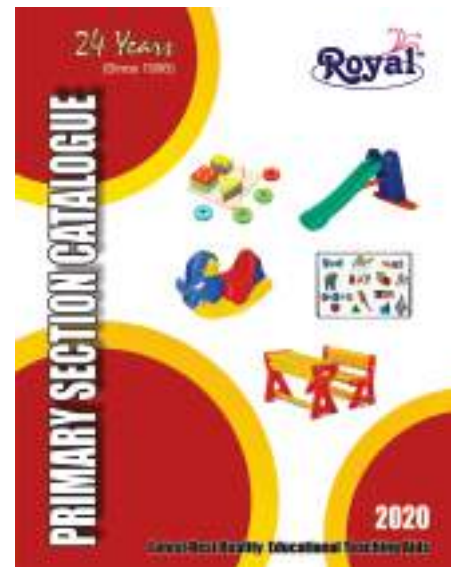
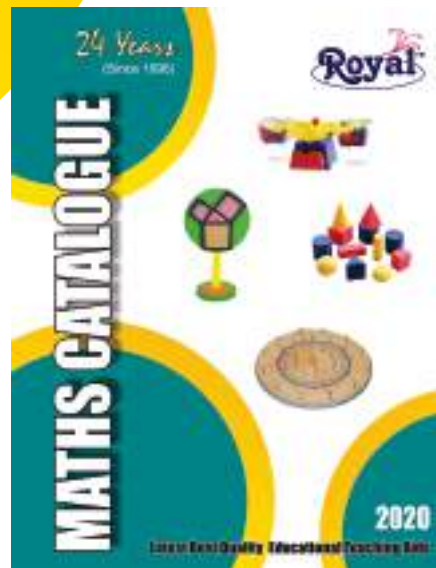
TERMS & CONDITIONS

1. This cancels all our previous catalogues & price lists.
2. All rates are NETT, Ex. Godown. Packing & Forwarding charges extra.
3. Goods will be dispatched within 15 days of receipt of Purchase Order along with the payment.
4. Form/Road Permit, if any, required by the govt. department for the entry of goods in other states will have to be sent along with the Purchase Order.
5. Taxes as per govt. rules will be charged extra.
6. Kindly mention clearly the Catalogue Code and the item code at the time of placing the order.
7. Please mention your VAT/CST registration no. and the name and address of your bankers along with your bank account number.
8. The warranty/responsibility for any quantity shortage or manufacturing defect will be taken in consideration only if the same is intimated immediately on receipt of material, or, at most, within one week (subject to situation so arising).
9. Thereafter, no claim will be entertained under any condition.
10. All disputes are subject to Delhi Jurisdiction only.
11. Prices are subject to change without prior notice.
12. The company reserves the right to discontinue any product at any time.

DISCLAIMER

All Maps, Charts, Toys, Models etc. depicted in the catalogue are the copyright of their respective publishers & manufacturers. The company is not responsible for any misprinting or misrepresentation in the same. Actual products may vary from the colours or pictures shown in the catalogue.

**PLEASE ASK FOR OUR
OTHER CATALOGUES**



IEC NO.: 0512045071

GST NO.: 07AEVPK6956J1ZM

ROYAL EDUCATIONAL STORES

A-117, SHOP NO. 6, CAPT. SATISH MARG,
RISHI NAGAR, RANI BAGH, DELHI-110034

Phone : +91-11-27034400 (M) +91-9312282680, +91-9868269122

Fax : +91-11-27034832

E-mail : royaleducationalstores@gmail.com

Website : www.royaleducationalstores.com